





82 Hillview Crescent Whitfield, QLD

 3
  2
  2
  2

## 1960's Character Home Teeming With Potential in Blue Chip Location

A sudden job transfer interstate sparks the sale of this character rich 1960's renovators dream. An incredible opportunity is on offer to a savvy buyer who is looking to add value to a home and who also understands the most important term to win in real estate; Location, Location!

Elevated to catch the breeze this two story home offers mountain views and boasts a premium position amongst substantially larger executive homes that sit along the upper section of Hillview Crescent which is revered locally as one of Whitfield's most exclusive streets.

- Open plan design with excellent cross flow breezes
- Beautiful hardwood timber floors throughout
- 3 bedrooms all with built in robes

Under Contract with Karl

**Type** : House  
**Sold Date** : Friday, 25th September 2020  
**Land** : 809 m2

**Council Rates** : \$3,742.00/year (approx)

**Karl Latham**

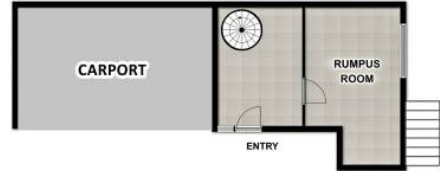
0403 887 645

**Daniel Roser**

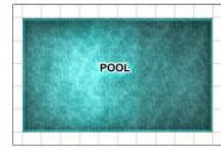
0423 647 751



*First Floor*



*Ground Floor*



**FLOOR PLAN**

Plan is not to scale and is indicative of layout. It is for illustrative purposes only. All room sizes and dimensions shown on this plan, including, but not limited to, doors, windows, cabinets are approximate. Property Shots Australia gives no guarantee to the accuracy of the document.

**82 Hillview Cres, Whitfield**