





4 Hanah Close Mount Sheridan, QLD

 4  3  2

Magnificent Value - Move FAST!

Sellers Motivation has Peaked - FIRST IN BEST DRESSED!

Commanding impressive street presence this magnificent family home is positioned high up the hill in the beautiful tree-lined Hanah Close, arguably the best street in Forest Gardens.

Perfect for those wanting a "move in ready home" the property has been beautifully renovated and styled throughout with close attention paid to practicality and livability for the modern growing family.

- Solidly constructed with suspended concrete slab second floor
- Fully air conditioned throughout
- Awesome mud room for kids shoes and school bags direct off the garage
- Lots and lots of storage

Under Contract with Karl

Type : House
Sold Date : Friday, 4th September 2020
Land : 735 m2

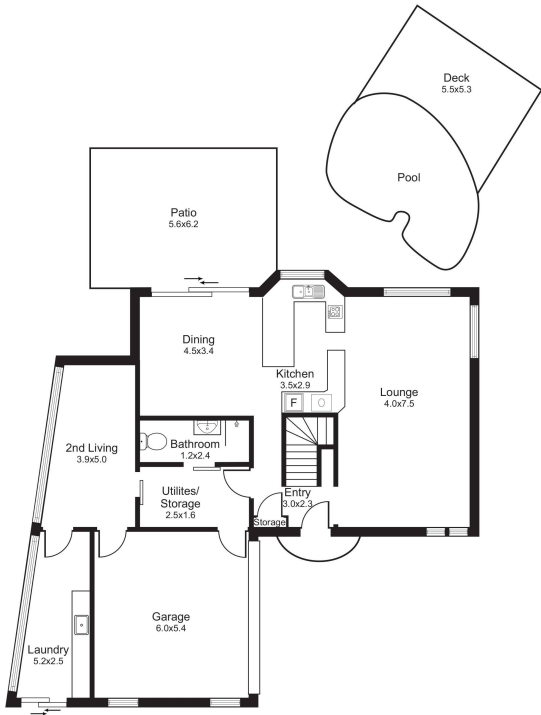
Council Rates : \$2,276.00/year (approx)

Karl Latham

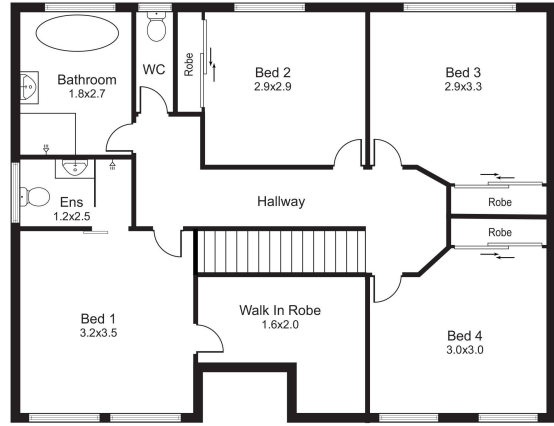
0403 887 645

Daniel Roser

0423 647 751



DOWNSTAIRS



UPSTAIRS

Illustrative Purposes only Dimensions are approx.
This drawing is not to scale