





27 Caesar Street Bentley Park, QLD

 4
  2
  2

Magnificent Legal Height Queenslander With Sensational Views

Located at one of the highest positions in Bentley Park this fantastic high set Queenslander boasts incredible views from East Trinity, across to the Pyramid and beyond.

Experience eco-friendly tropical living with amazing cross flow breezes, extra high ceilings, 3kw solar power and many other features perfectly suited for comfortable living in our Far North Queensland climate.

- Beautiful black bean hardwood timber floors
- Extra high 2.9m ceilings
- Aluminium casement windows with fly screens
- Fully air conditioned

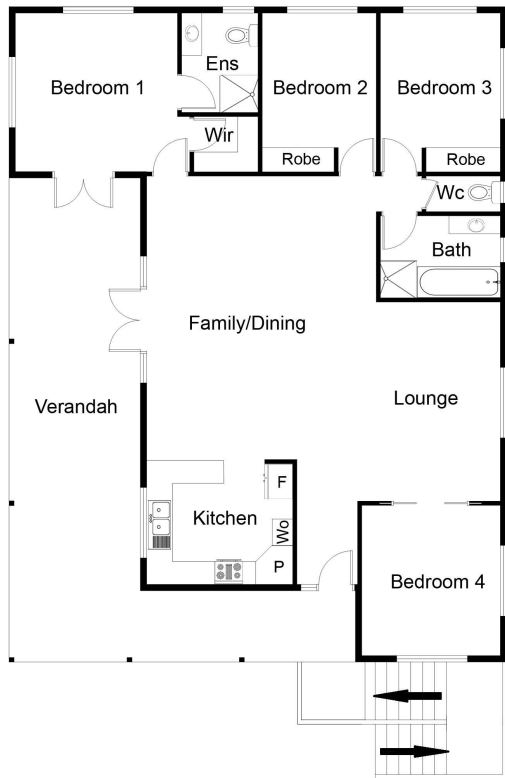
Under Contract with Karl

Type : House
Sold Date : Monday, 9th December 2019
Land : 786 m2

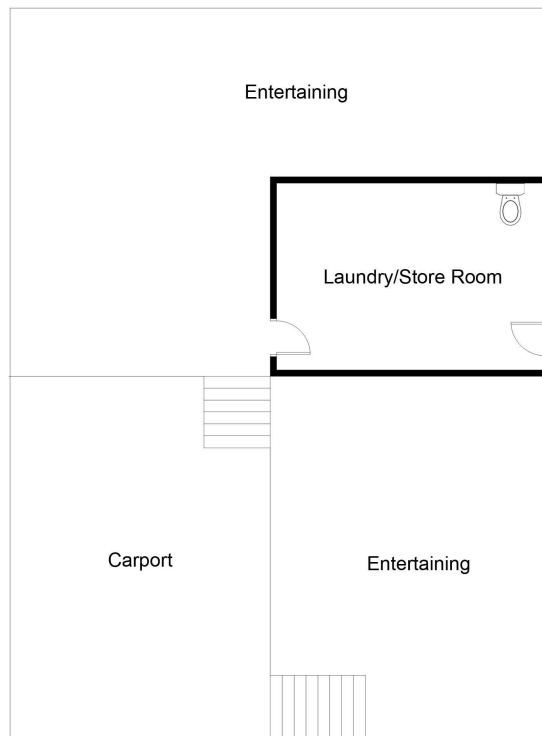
Council Rates : \$2,818.00/year (approx)

Karl Latham
0403 887 645

Daniel Roser
0423 647 751



UPPER FLOOR PLAN



LOWER FLOOR PLAN

This floor plan including furniture, fixture measurements and dimensions are approximate and for illustrative purposes only. Boxbrownie.com gives no guarantee, warranty or representation as to the accuracy and layout. All enquiries must be directed to the agent, vendor or party representing this floor plan.

27 Caesar Street, Bentley Park
 Bentley Park, QLD

