



3 Airlie Close Mount Sheridan, QLD

 3
  2
  3

Immaculate home with shed

This standout property offers low maintenance living with a spacious design that delivers a smooth indoor/outdoor connection with easy care landscaped gardens and privacy.

The floor plan comprises a homely open living/dining zone that connects seamlessly to the large undercover patio and pool area. Relax on the rear patio and take in the beautiful view towards the Pyramid.

With endless amounts of storage you will have room for all the toys with side access to a shed 3.8 x 7.8 meters with mezzanine floor, power and water. Wired for auxiliary power which includes a 2.7 K.V.A generator, there is also ample space for your caravan or boat out the front, adding to the appeal.

Finishing touches include fresh interior and exterior paint, air-conditioning and solar panels set on a large parcel of land 915m2. With easy access to local schools, shops and pub

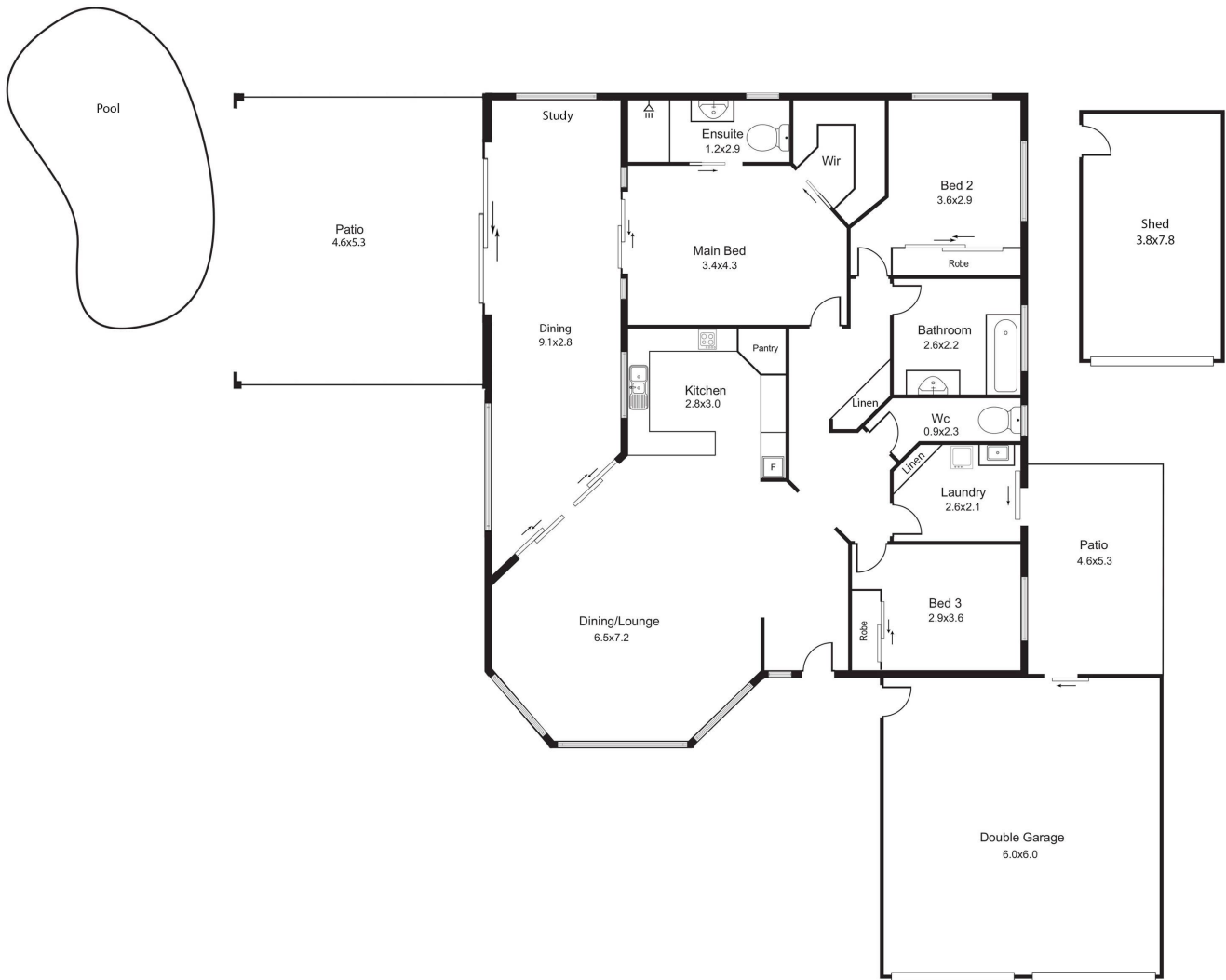
Offers Over \$435,000

Type : House
Sold Date : Wednesday, 31st October 2018
Land : 915 m2

Cathy Bowrey

Daniel Roser

0423647751



Illustrative Purposes only Dimensions are approx.
This drawing is not to scale

3 Airlie Close

Mount Sheridan, QLD

